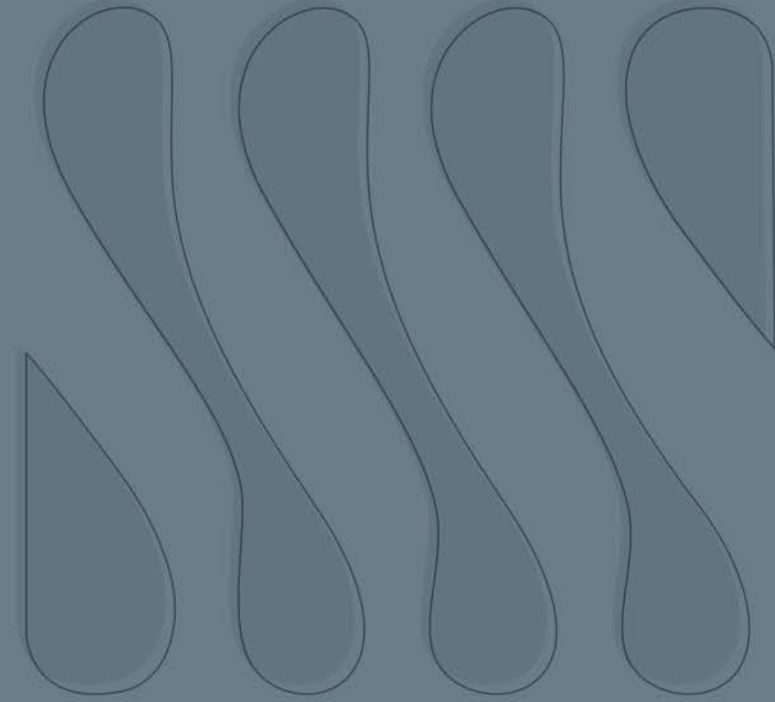




**SHILP AARON**

your own business arena



## *attract your wealth*

Business is a game of finding potential avenues of wealth generation. It is all about taking smart decisions and acting faster than others. Shilp Aaron, an exclusive business avenue on the most upbeat commercial vistas of Ahmedabad, gives you ample reasons to embark upon your way to wealth, swiftly.



*reflect your class*

Business is a game of recognizing your true potential and building an enviable stature upon it. With its smart and futuristic facade, Shilp Aaron gives your business much coveted leverage effortlessly.



*affirm your sophistication*

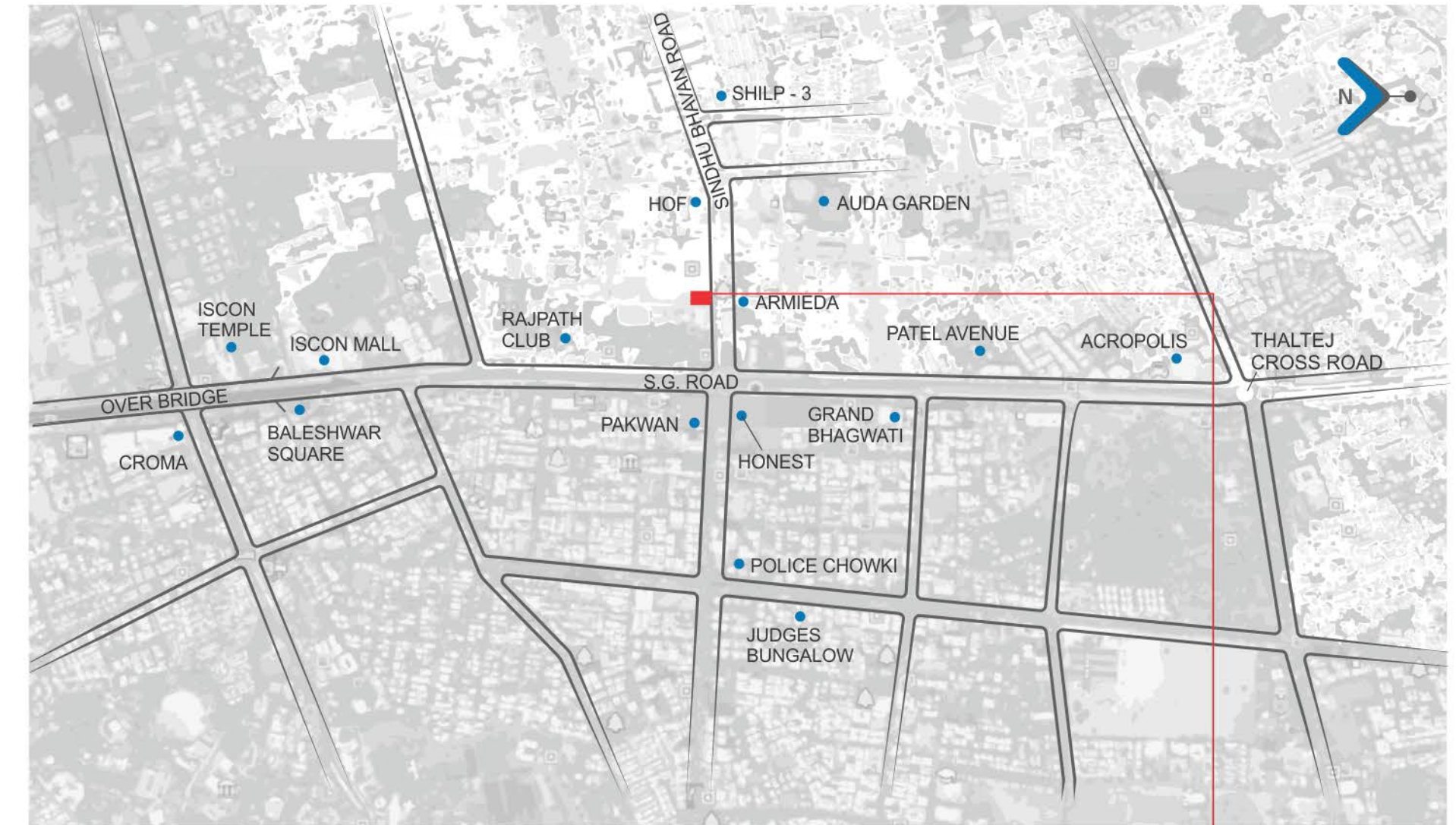
Business is a game of having advanced outlook and guts to outpace rivals. It can be easily achieved with an address that can convey your superiority. Shilp Aaron with its global outlook lends your business a striking edge over others.





## *leverage your location*

Shilp Aaron is located in one of the most happening commercial avenues of the city. Strategically located on one of the busiest crossroads on the S. G. Road, Shilp Aaron gives your business all the advantages of a perfect location. It has reputed hotels, clubs and business centres in close vicinity and at the same time, it connects you with the other hubs of the city easily.



*rare opportunity for retailers*



Shilp Aaron is designed strategically to meet the various needs of diverse types of businesses. Designing a smart mix of space, the complex has earmarked suitable options for shops and showrooms. The ultramodern design of the complex establishes desired links with the potential shoppers.





*office spaces, full of opportunities*



Shilp Aaron offers an entire building for elegant and exclusive office spaces. Ideal to set up offices of wide scales, it can also house an entire corporate office. Equipped with all the modern amenities, the office arena here offers you an address that you want for your business.



## features



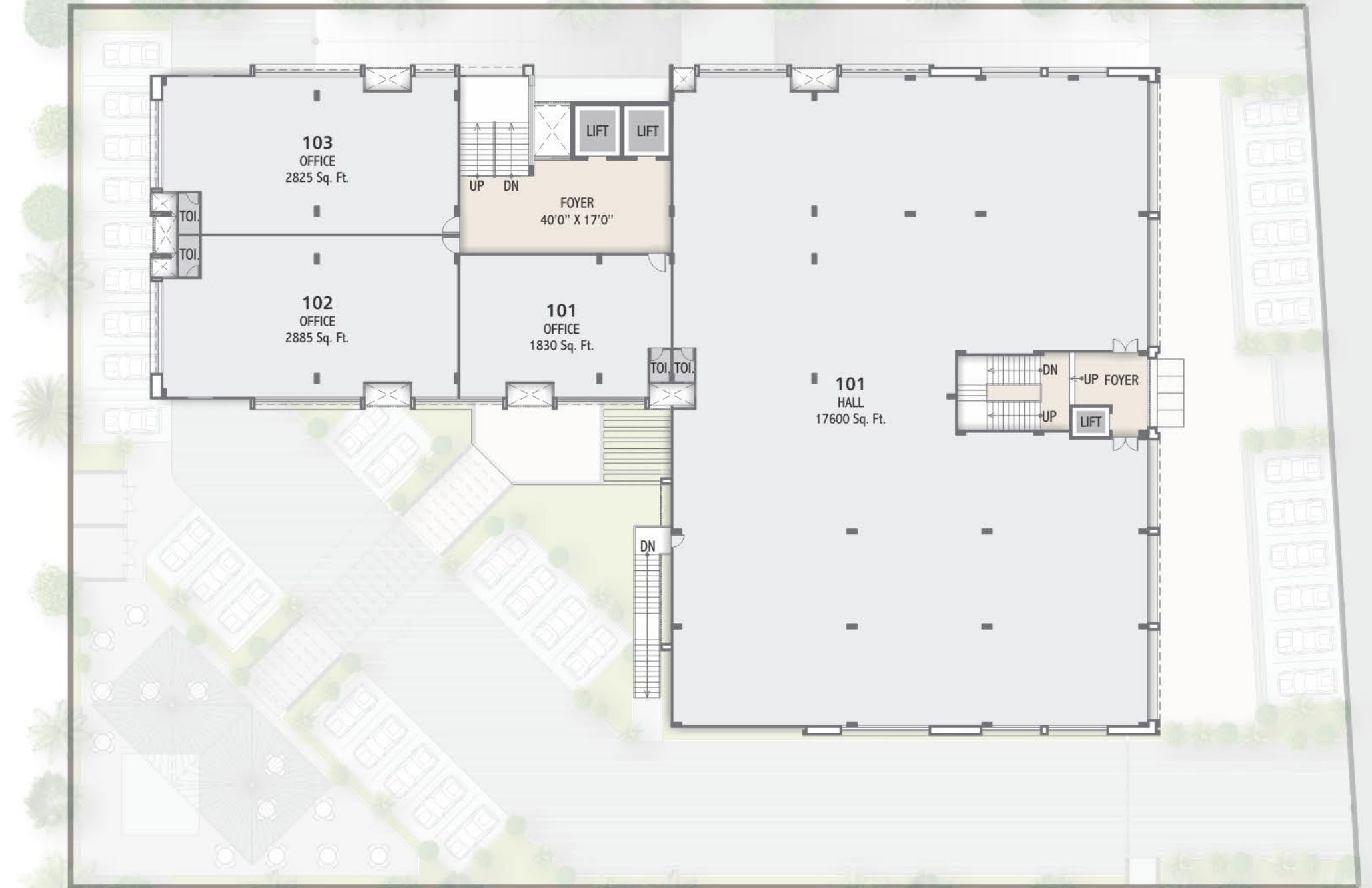
Main gate with security | Parking at ground floor | Parking at basement | Visitors parking  
Cafeteria | Entrance foyers | Fully automatic lifts | 24 hour water supply



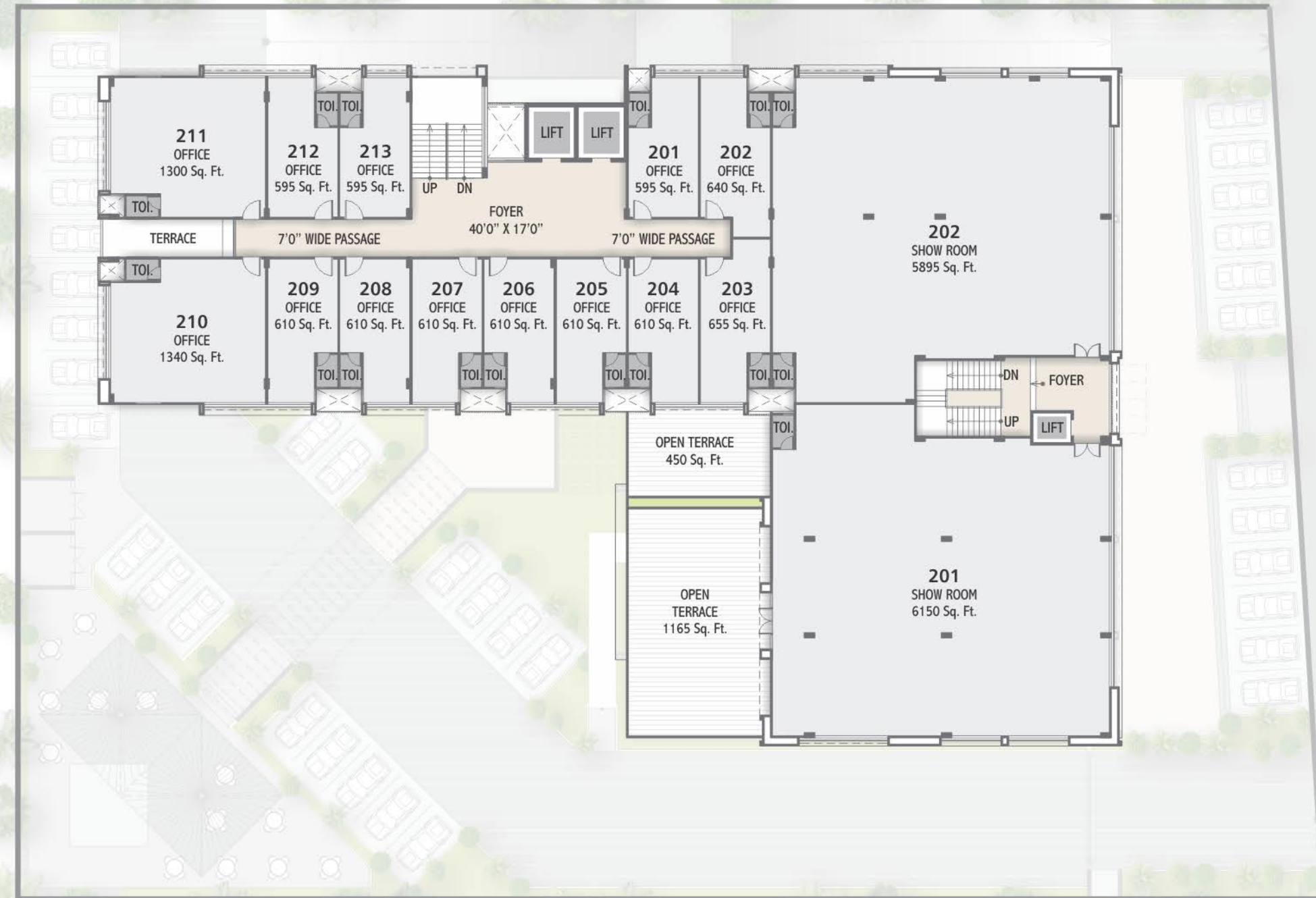
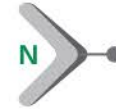
*ground floor plan*



*first floor plan*



*second floor plan*



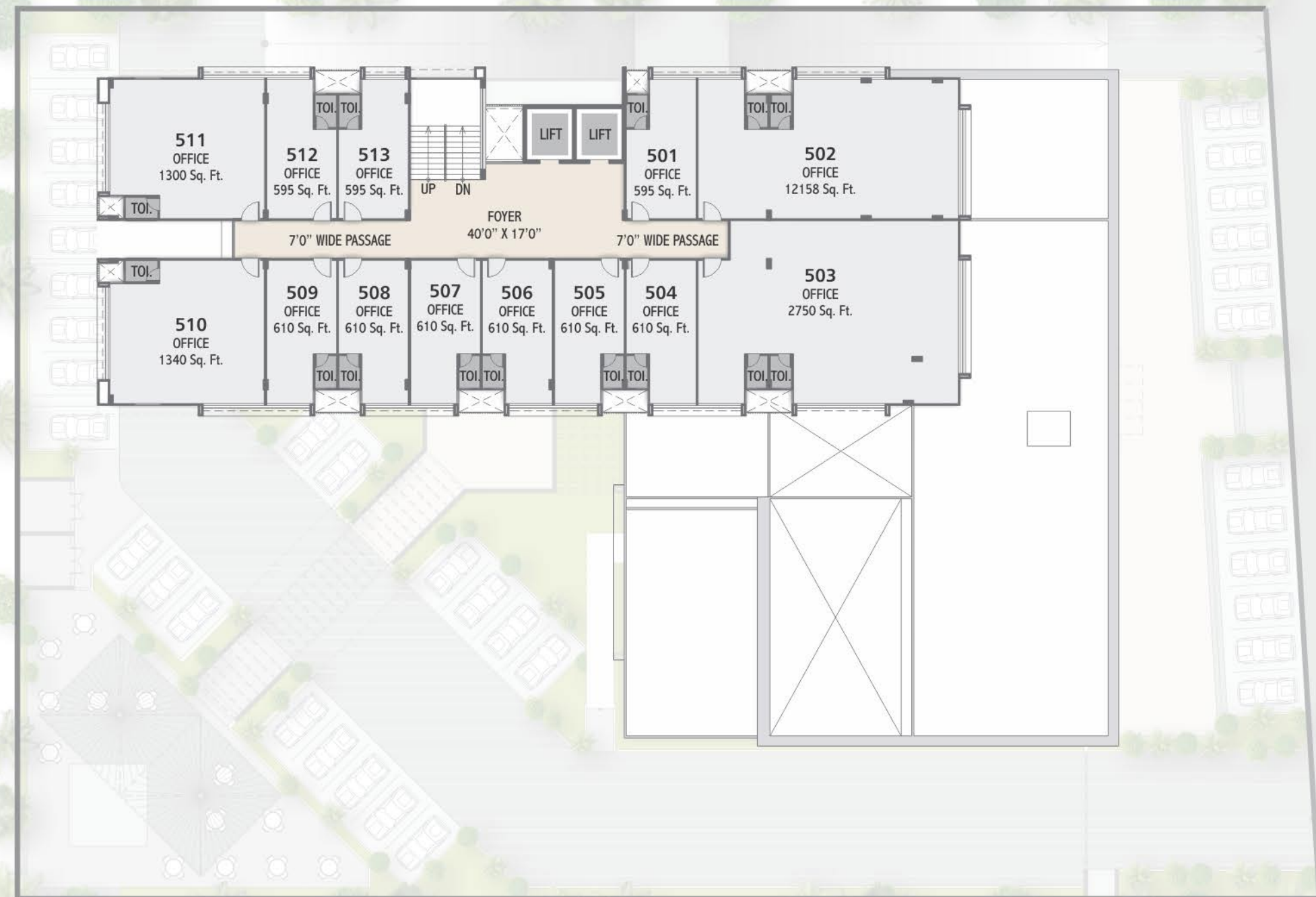
*third floor plan*

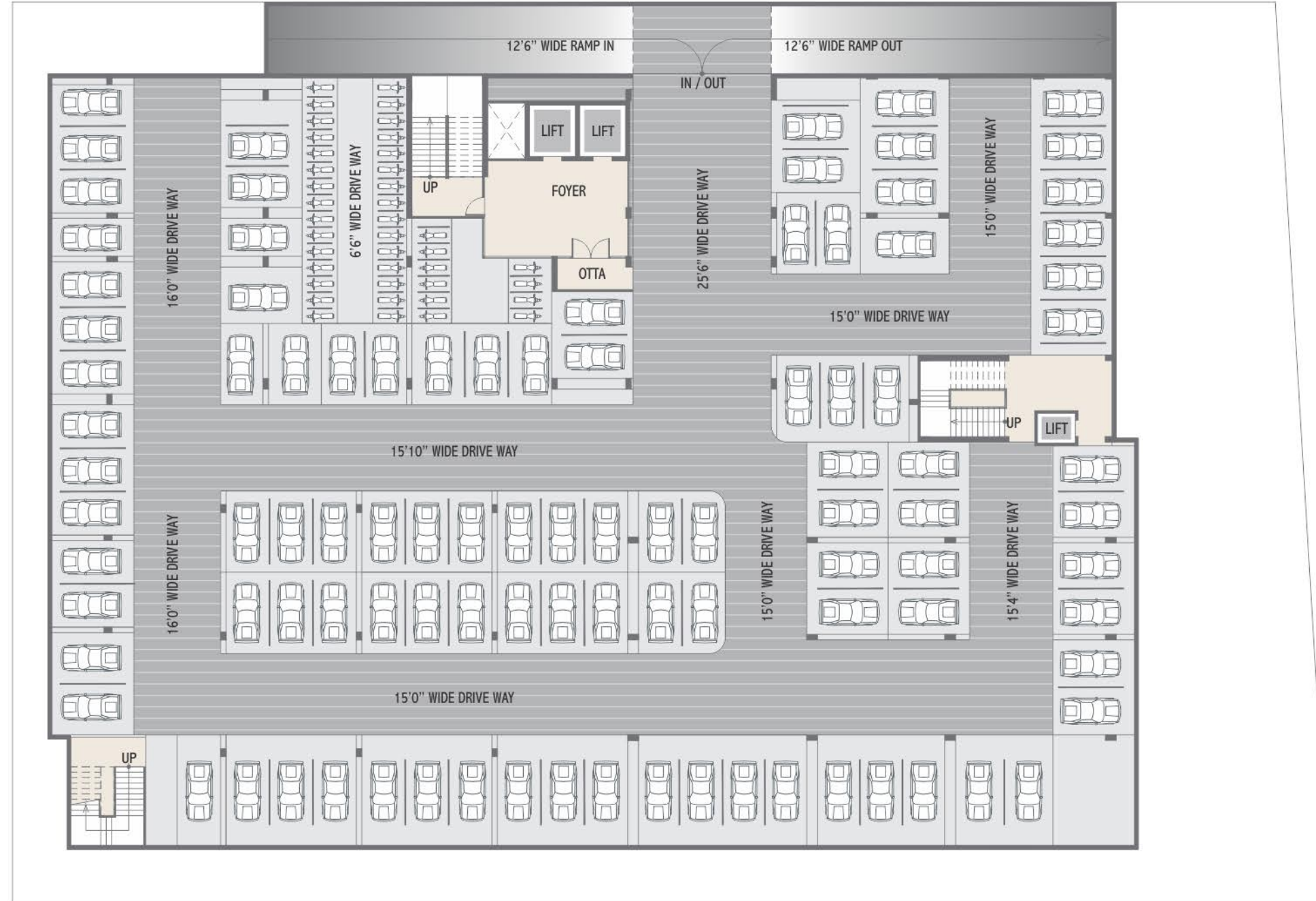


*fourth floor plan*



*fifth & sixth floor plan*





Project by



For booking call  
+91 99090 05991, +91 98258 02504



ISO 9001 : 2008  
CERTIFIED COMPANY



Architect



NOTES

- AEC, AMC charges, legal charges deposit & other Govt. charges shall be paid separately.
- Maintenance should be paid separately in advance.
- Right of any changes in dimensions, design & specifications reserved with the developer, which shall be binding for all members.
- External changes not allowed.
- Stamp duty and registration fees & service charges on allotment and possession of unit shall be borne by purchaser applicable as prevailing law.
- Any additional liabilities due to change in the by-laws, stamp duty, Govt. laws shall be borne by member.
- New rate will be applicable in case of delay in payments.
- Terms & conditions as per separate agreement.
- This brochure is meant only for information presentation & guidance purpose only it is not authorized document or agreement. They do not form the basis of any contract.
- Variations may occur as per local regulation and our policy of improvement.
- The dimensions shown in the brochure are approximate.

[www.shilpaaron.com](http://www.shilpaaron.com)